

National Highways Authority of India (Ministry of Road Transport & Highways)

Patel Vadodara Kim Expressway Pvt. Ltd.

Construction of Eight lane Vadodara Kim Expressway from Km 292.00 to Km 323.00 (Manubar to Sanpa Section of Vadodara Mumbai Expressway) in the State of Gujarat under NHDP Phase - VI on Hybrid Annuity Mode (Phase IA-Package III)" .

INDEPENDENT ENGINEER

Aarvee Associates Architects Engineers & Consultants Pvt. Ltd.

MONTHLY PROGRESS REPORT

For The Month of March-2019

Executive Summary

The Patel Vadodara - Kim Expressway Private Limited. has been awarded Construction of Eight Lane Vadodara Kim Expressway from Km 292.00 to Km 323.00 (Manubar to Sanpa Section of Vadodara Mumbai Expressway) in the State of Gujarat Under NHDP Phase - VI on Hybrid Annuity Mode (Phase IA- Package III).

The road passes through plain and rolling terrain. Land use is mostly agricultural with Black Cotton soil. The entire length of the project road falls in the state of Gujarat under Bharuch Districts. The Function of expressway is to cater for movement of heavy volumes of motor traffic at high speeds. They connect major points of traffic generation and are intended to serve trips of medium and long length between large residential areas, industrial or commercial concentrations, and the central business district. They are divided highways with high standards of geometric and full or partial control of access and provided generally with grade separation at intersections. Parking, loading and unloading of goods and passengers and pedestrian traffic are not permitted on these highways.

This report covers the activities for the month of March 2019. The Embankment work of the main carriageway is started and 6.5 Km of work is in progress. The overall Physical progress as on 31st March 2019 is assessed to be approximately 0.67%. The financial progress achieved 31st March 2019 is assessed to be 0.82 %.

The Project involves the Eight Lane new alignment with divided carriageway having total 119 structures which include 1-ROB, 1-Flyover, 1-VOP, 3-MJBs.

The Major National Highways and State Highways intersecting the project corridor are NH-228, SH-161.

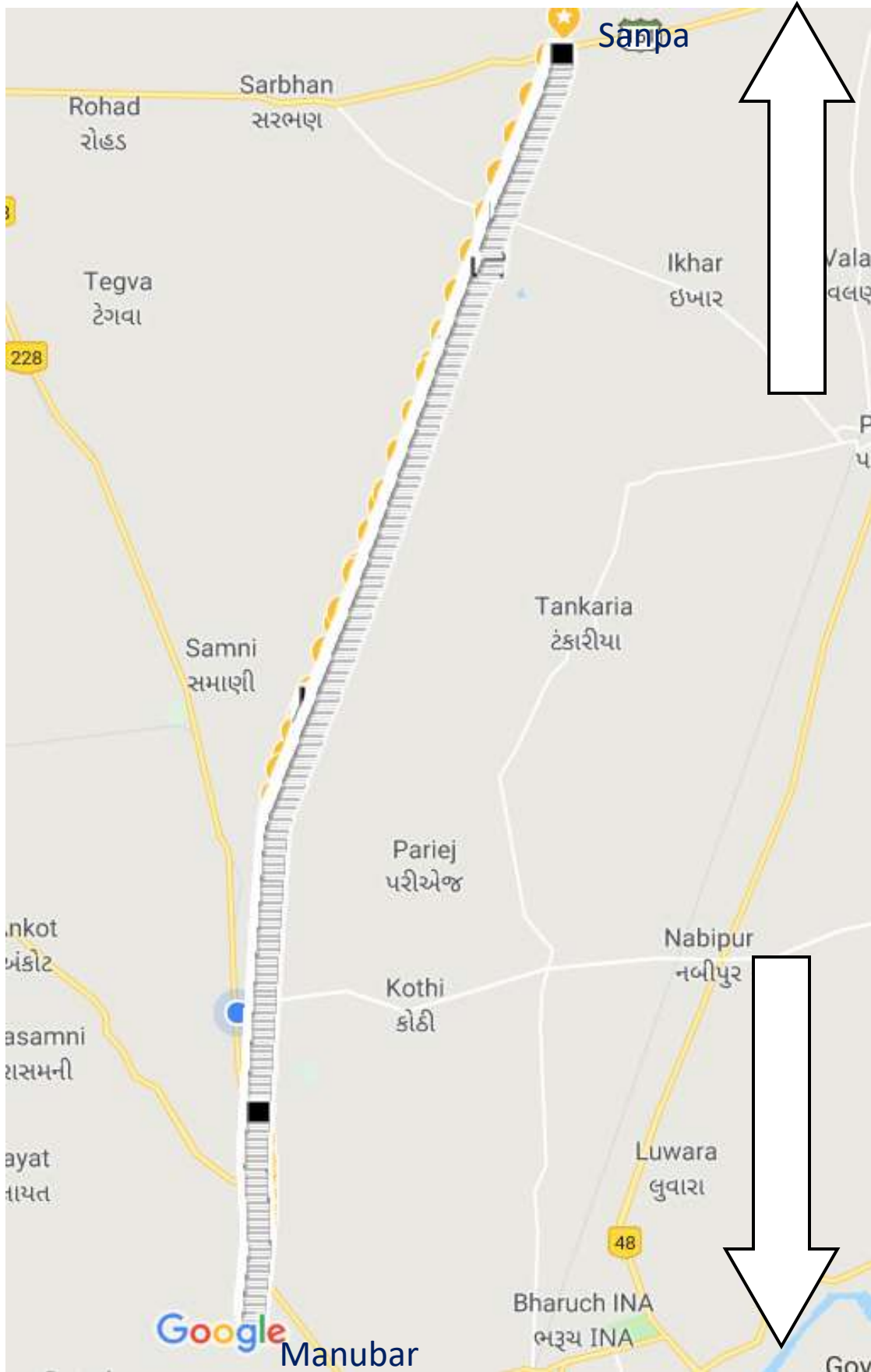
Project Synopsis

National Highways Authority of India plans to undertake the Construction of new alignment 8-lane from Manubar to Sanpa from Km 292.000 to 323.000 in the State of Gujarat under NHDP Phase-VI on Hybrid Annuity Mode (Length 31.00 Km.) – Package III.

The project involves new alignment from 292.000 Km to 323.000 the 8-lane divided carriageway. It includes the construction of bridges, intersections, Connecting roads, culverts and related infrastructure, and the installation of signaling systems and signboards. The project will be developed under National Highways Development Project (NHDP) Phase-VI on Hybrid Annuity Mode.

Existing and Proposed alignment

Sr. No	Design Chainage		Length	Village	Remark
	From	To			
1	292+000	292+700	0.700	Manubar	
2	292+700	293+850	1.150	Tham	
3	293+850	296+050	2.200	Derol	
4	296+050	297+500	1.500	Tralsi	
5	297+550	300+500	2.950	Dayadara	
6	300+500	301+200	0.700	Tralsa	
7	301+200	305+550	4.350	Kelod	
8	305+550	307+750	2.200	Karela	
9	307+750	310+900	3.150	Kurchan	
10	310+900	314+300	3.400	Simartha	
11	314+300	317+200	2.900	Dora	
12	317+200	318+900	1.700	Danda	
13	318+900	321+600	2.660	Suthodara	
14	321+600	232+000	1.440	Matar Talpad	



Towards
Vadodara



Towards
Mumbai

PROJECT SUMMARY

Sr. No.	Component	Remarks
1	Project	Construction of Eight lane Vadodara Kim Expressway from Km 292.00 to Km 323.00 (Manubar to Sanpa Section of Vadodara Mumbai Expressway) in the State of Gujarat under NHDP Phase - VI on Hybrid Annuity Mode (Phase IA- Package III)"
2	Name of the Employer	National Highways Authority of India
3	Name of Concessionaire	Patel Vadodara Kim Expressway Pvt. Ltd.
4	Name of EPC Contractor	Patel Infrastructure Ltd.
5	Independent Engineer	Aarvee Associates Architects Engineers & Consultants Pvt. Ltd
6	Design Consultant	SPECIALIZED ENGINEERING SERVICES PVT. LTD
7	Project Length (In Km)	31.00 Km
8	Date of Concession Agreement	11 th May, 2018
9	Total Project Cost as per CA	1712.00 Cr.
10	Concession Period	15 Years
11	Construction Period	730 Days
12	Appointed Date	08 th March 2019
13	Completion Date	07 th March 2021
14	Maintenance Period	15 Years

1.2 Project Overview

1.2.1 Structures

Sr. No.	Feature	Description
1	Major Bridge	03 Nos.
2	Flyover	01 No.
3	ROB	01 No.
4	Minor bridges	11 Nos.
5	Vehicular underpass	03 Nos.
6	Light Vehicular Underpasses	07 Nos.
7	Vehicular Overpasses	01 No.
8	Culverts (HP/BC)	62 Nos. (35 Nos. Pipe / 27 Nos. Box)
9	Toll Plaza	1 No.
10	Truck Parking Facility	02 Nos.
11	Toilet Facility	03 Nos.

Project Milestones

Sr. No.	Project Milestone	Period to achieve the Milestone	Required % of Physical & Financial Work Completion to Achieve	Date of Milestone Achievement as	Financial Progress
1	Milestone - 1	150 th Day	20%	05/08/2019	342.4
2	Milestone – 2	330 th Day	35%	01/02/2020	599.2
3	Milestone – 3	480 th Day	75%	30/06/2020	1284.0
4	Milestone – 4	730 th Day	100%	07/03/2021	1712.0

Progress of Work

Sr.No	Item	Work in Progress	This Month Progress	Cumulative Progress
Highway Progress (Km.)				
1	C & G	1.05	35.2	36.25
2	Embankment	6.65	0	6.25
3	Subgrade	0	0	0
4	G.S.B	0	0	0
5	D.L.C	0	0	0
6	P.Q.C	0	0	0
Structure Progress:				
1	HPC	2	4	6
2	BC	3	0	3
3	MNB	0	0	0
4	MJB	2	0	2
5	VUP	0	0	0
6	LVUP	0	0	0
7	PUP	3	0	3
8	Flyover	0	0	0

Physical Progress achieved Upto March-2019:- 0.67 %

1.1 Summary of Progress

Summary of Progress (March 2019) Highway Progress:

Sr. No.	Item	Unit	Scope of work	Completed / Work in progress	Balance work
1	C & G	Km	62.00	35.20	26.8
2	Earthwork	Km	58.60	00.00	58.60
3	Sub- Grade	Km	58.60	00.00	58.60
4	GSB	Km	58.60	00.00	58.60
5	DLC (MC)	Km	58.60	00.00	58.60
6	PQC (MC)	Km	58.60	00.00	58.60

Structure Progress Status:-

Sl. No.	Structure Details:-	Unit	Scope	Completed	Work in progress	Balance
1	Major Bridge	Nos	03	0	02	01
2	Flyover	Nos	01	0	0	01
3	Minor Bridge	Nos	11	0	0	11
4	Box Culvert	Nos	27	0	03	24
5	Pipe Culvert	Nos	35	4	02	29
6	Vehicular Underpass	Nos	03	0	0	03
7	Light Vehicular Underpass	Nos	07	0	0	07
8	PUP	Nos	30	0	03	27
9	ROB	Nos	1	0	0	1

Utility Shifting Status.

08-03-2019 is the Appointed Date for the project. 87.88% of the land measuring to Km 27.242 has been handed over by the Authority. 12.12% of land is balance due to presence of structures and other land related issues.

1. Electrical Utilities estimate submitted to IE and IE recommended to PD for approval of competent authority
2. Water Pipelines Estimate Received and PD, Surat has written vide letter no. NHAI/PIU-SURAT/P-3/2019/51-utility/524 to Executive Engineer for Submit revised estimate because estimate are very old.
5. HT line have been identified and submitted to concern Department for preparation of estimate. Approval pending.

Details of numbers and length are as below: -

Sr. No	Utility	Length/No.	Status	Balance	Present Status
1	Electric Poles	51 Nos	51	51	
2	Water Pipe Line (km)	64 Nos	0	64	
3	HT Line Crossing	6 Nos	0	6	Survey / Route profile done. Estimation preparation under progress

Electrical Hindrance

Sr. No	Div. Name	Sub-Div. Name	Village Name	Chainage		Length	Description	No. Of Pole	Estimate Status				Remarks	
				From	To	(Mt)			DGVCL Submitted	IE Submitted	PD Submitted	RO Submitted		
1	Bharuch	Bharuch (Rural)	Tham	292+875	292+895	20.00	ELECTRIC LINE CROSSING	3	Yes	IE reviewed the estimate and recommended to PD for approval of competent authority vide latter no. AA/VKE/NHAI/PVKEPL/011/18-19/USW/074 on dated 13.02.2019				
				292+905	293+015	20.00	ELECTRIC LINE CROSSING	2						
			Derol	294+780	295+200	20.00	ELECTRIC LINE CROSSING	14						
				295+270	295+480	210.00	ELECTRIC CROSSING GROSSING	2						
				295+400	295+550	150.00	ELECTRIC CORSSING GROSSING	3						
				295+560		10.00	ELECTIRIC CROSSING GROSSING	3						
				296+080	296+100	20.00	ELECTIRIC CROSSING GROSSING	5						
				301+920		10.00	ELECTRIC LINE CROSSING	3						
			Kelod	302+140	302+230	190.00	ELECTRIC LINE CROSSING	2						Yes
				303+770	303+830	60.00	ELECTRIC LINE CROSSING	2						
					Pipaliya	304+050	304+100	50.00						ELECTRIC LINE CROSSING
2	Bharuch	Palej	Tralsa	300+560	300+850	290.00	ELECTRIC LINE CROSSING	3	Yes	IE reviewed the estimate and recommended to PD for approval of competent authority vide latter no. AA/VKE/NHAI/PVKEPL/009/18-19/USW/072 on dated 13.02.2019				
				300+920		10.00	ELECTIRC CROSSING GROSSING	2						
3	Bharuch	Amod	Karela	307+170	307+180	10.00	ELECTRIC LINE CROSSING	3	Yes	IE reviewed the estimate and recommended to PD for approval of competent authorityvide latter no. AA/VKE/NHAI/PVKEPL/010/18-19/USW/073 on dated 13.02.2019				
			Kurchan	310+000	310+080	80.00	ELECTRIC LINR CROSSING	2						

Gas Pipe Line Status									
Sl.No.	Owner / Approving Authority	Name of Bridge	No. of Bridges	Location (VME Ch.)	Span Arrangement c/c exp (m)	Revised GAD No.	Letter of Approval	Approval Status	Remarks
1	GAIL GAIL Baroda/ Mr. Hemendra Sharma, Chf Mgr (NG P/L O&M- Undera Gas Station , Growa Refinery Road, Opp. RIL Corporate Office, Undera, Distt. Vadodara-391330 (Gujarat), 0265-2265258/59, hrsharma@gail.co.in	Minor Bridge over Gas Pipe Line (sk 37°) R	3	296+430	1 x 27.846	NHAI/MVE/GPB-296+430/GAD/R1 (Sheet 1 of 2 & Sheet 2 of 2)	Approval Letter No. GAIL/UND/O&M/NHAI-ROB/12 dtd. 05.03.2013 along with Invoice or processing fee and supervision charges vide its no. GAIL\BDA\CONSULTANCY\15\12-13 dtd. 05.03.2013 addressed to PD, NHAI	GADs Approved in principle	NHAI to deposit Supervision Charges and Processing Fee and to execute crossing aggrement for issue of final approval of GADs. Amount Rs. 1,57,304/-
2		Minor Bridge over Gas Pipe Line (sk 20°) R		304+430	1 x 22.687	NHAI/MVE/GPB-304+430/GAD/R1 (Sheet 1 of 2 & Sheet 2 of 2)			
3		Minor Bridge over Gas Pipe Line (sk 55°) R		309+070	1 x 45.20	NHAI/MVE/GPB-309+790/GAD/R1 (Sheet 1 of 2 & Sheet 2 of 2)			
4	GSPL GSPL Pipeline/ Mr. Chinmay Tripathi, AGM, (O&M)- Phaguthan Terminal, Post: Haldar, Opp. GPEC Power Plant, Dist. Bharuch-392210. chinmay@gspc.in, Cell No.- 09825035755, Tel: 02642-288650, 288889.	Minor Bridge over Gas Pipe Line (sk 69°) R	1	310+732	1 x 21.35	NHAI/MEV/GPB-310+732/GAD/RO, (Sheet 1 of 2 & Sheet 2 of 2)	Approval Letter No. GSPL/O&M/RoU/MVE/2.4.2/140213/01 dtd. 14.02.13 addressed to PD, NHAI- Forwarded to ICT vide PD Letter No. "NHAI/PIU-Surat(Expressway)/2103/51-1/2013/51-2/625 DTD. 15.02.2013	GADs Approved	No action required.

HIGH TENSION LINE CROSSING										
Sl. No.	Div. Name	Sub-Div. Name	Village Name	Chainage		HT line Nos.	Estimate Status			
				From	To		Getco Submitted	IE Submitted	PD Submitted	RO Submitted
1	Bharuch	Bharuch	Derol	296+350	296+480	6	Estimate Under Progress			
			Karela	308+170	308+230					
				308+300	308+570					
			Tralsa	300+370	300+408					
				300+100	300+020					
Simltha	312+085	312+480								

Sl. No.	Division	Sub-Division	Chainage	Status	Remarks
Water Pipeline					
1	GWSSB Executive Engineer Public Health Works Division Bharuch	Jambusar	-	1) Estimated Received. (2) PD,Surat has written vide letter no. NHA/PIU-SURAT/P-3/2019/51-utility/524 to Executive Enginner for Submit revised estimate because estimate are very old.	-
2		Bharuch	-		-

ROB Status

Proposal Description	Status	Current Stage	Issues/ Comments
Rail ROB	GAD of ROB Approved	Detailed design and drawing Under Progress.	

STATUS OF LAND FOR DEVELOPMENT OF THE PROJECT HIGHWAY

PROJECT: Construction of Eight lane Vadodara Kim Expressway from Km 292.00 to Km 323.00 (Manubar to Sanpa Section of Vadodara Mumbai Expressway) in the State of Gujarat under NHDP Phase - VI on Hybrid Annuity Mode (Phase IA-Package III)”

Land Status

Appendix 1A

Sr.No.	CHAINAGE		LENGTH (KM)	CLEAR LENGTH (KM)	UNCLEAR LENGTH (KM)	SURVEY NO	SIDE	VILLAGE	REMARKS
	FROM	TO							
1	292+000	292+200	0.200	0.200				Manubar	
2	292+200	292+400	0.200		0.200			Manubar	
3	292+400	292+700	0.300	0.300				Manubar	
4	292+700	292+875	0.175		0.175	207	BHS	Tham	
5	292+875	293+850	0.975	0.975				Tham	
6	293+850	296+050	2.200	2.200				Derol	
7	296+050	297+300	1.250	1.250				Taralasi	
8	297+300	297+311	0.011		0.011	481	LHS	Taralasi	
9	297+311	297+500	0.189		0.189	481		Taralasi	
10	297+500	297+550	0.050	0.050				Taralasi	
11	297+550	300+500	2.950	2.950				Dayadara	
12	300+500	300+700	0.200	0.200				Taralasa	
13	300+700	300+753	0.053		0.053	498	RHS	Taralasa	
14	300+753	300+810	0.057		0.057	499	RHS	Taralasa	
15	300+810	301+200	0.390		0.390			Taralasa	
16	301+200	301+500	0.300		0.300			Kelod	
17	301+500	301+600	0.100		0.100	253 & 253/1	BHS	Kelod	
18	301+600	305+550	3.950	3.950				Kelod	
19	305+550	307+750	2.200	2.200				Karela	
20	307+750	310+300	2.550	2.550				Kurchan	
21	310+300	310+400	0.100		0.100			Kurchan	
22	310+400	310+900	0.500	0.500				Kurchan	
23	310+900	314+300	3.400	3.400				Simlatha	
24	314+300	317+200	2.900	2.900				Dora	
25	317+200	318+900	1.700	1.700				Danda	
26	318+900	321+500	2.600	2.600				Suthodara	
27	321+500	321+558	0.058		0.058	118	LHS	Suthodara	
28	321+558	321+577	0.019		0.019	475	LHS	Matar Talpad	
29	321+577	321+680	0.103		0.103			Matar Talpad	
30	321+680	321+800	0.120	0.120				Matar Talpad	
31	321+800	321+861	0.061		0.061	468	RHS	Matar Talpad	
32	321+861	321+900	0.039	0.039				Matar Talpad	
33	321+900	321+978	0.078		0.078	467	RHS	Matar Talpad	
34	321+978	323+000	1.022	1.022				Matar Talpad	
Length % of Project			31.000	29.106	1.894				
			100%	93.89%	6.11%				

Details of Electrical Utilities				
				Appendix-1B
A) Electric Pole and Transformer				
SR. NO.	CHAINAGE	SIDE	TYPE	REMARKS
1	292+890		2/11 KV	Electric Pole and Line Crossing
2	292+930		6/11 KV	Electric Pole and Line Crossing
3	294+785		2/11 KV	Electric Pole and Line Crossing
4	294+880		6/11 KV	Electric Pole and Line Crossing
5	295+282		3/11 KV	Electric Pole and Line Crossing
6	295+510		4/11 KV	Electric Pole and Line Crossing
7	295+990		5/11 KV	Electric Pole and Line Crossing
8	300+520		6/11 KV	Electric Pole and Line Crossing
9	300+910		2/11 KV	Electric Pole and Line Crossing
10	301+330		2/11 KV	Electric Pole and Line Crossing
11	301+400		1/11 KV	Electric Line Crossing & transformer
12	301+940		2/11 KV	Electric Pole and Line Crossing
13	303+780		2/11 KV	Electric Pole and Line Crossing
14	304+050		2/11 KV	Electric Pole and Line Crossing
15	307+165		3/11 KV	Electric Pole and Line Crossing
16	307+193		2/11 KV	Electric Pole and Line Crossing
17	310+000		3/11 KV	Electric Pole and Line Crossing
18	311+540		2/11 KV	Electric Pole and Line Crossing
19	312+090		1/11 KV	Electric Pole and Line Crossing
20	312+695		3/11 KV	Electric Pole and Line Crossing
21	313+340		2/11 KV	Electric Pole and Line Crossing
22	313+370		1/11 KV	Electric Pole and Line Crossing
23	315+770		4/11 KV	Electric Pole and Line Crossing
24	315+950		1/11 KV	Electric Pole and Line Crossing
25	316+530		2/11 KV	Electric Pole and Line Crossing
26	318+600		3/11 KV	Electric Pole and Line Crossing
27	318+800		4/11 KV	Electric Pole and Line Crossing
28	318+840		2/11 KV	Electric Pole and Line Crossing
29	318+860		2/11 KV	Electric Pole and Line Crossing
30	319+000		2/11 KV	Electric Pole and Line Crossing
31	320+685		11 KV	Electric Pole and Line Crossing
32	320+690		11 KV	Electric Pole and Line Crossing
33	322+700		3/11 KV	Electric Pole and Line Crossing
34	322+880		11 KV	Electric Line Crossing & transformer
B) GETCO High Tension Line				
35	296+415		1/66 KV	Getco HT line Crossing
36	300+100		220 KV	Getco HT line Crossing
37	300+390		1/220 KV	Getco HT line Crossing
38	308+200		2/66 KV	Getco HT line Crossing
39	308+400		1/66 KV	Getco HT line Crossing
40	312+270		1/400 KV	Getco HT line Crossing

Details of Water Pipe Lines/Bore well/Canal Crossing

Appendix-1C

SR. NO.	CHAINAGE	SIDE	TYPE	REMARKS
1	292+600	BHS	Pipe line Crossing	
2	294+730	BHS	Canal	
3	294+985	BHS	Canal	
4	295+150	BHS	Canal	
5	295+585	BHS	Canal	
6	299+700	BHS	Canal	
7	299+750	BHS	SSNNL underground pipe Canal	
8	300+148	BHS	Canal	
9	301+224	BHS	SSNNL underground pipe Canal	
10	301+370	BHS	SSNNL underground pipe Canal	
11	301+380	LHS	Water bore	
12	301+400	BHS	SSNNL underground pipe Canal	
13	301+403	LHS	Water bore	
14	303+670	BHS	SSNNL underground pipe Canal	
15	304+380	BHS	SSNNL underground pipe Canal	
16	305+210	BHS	SSNNL underground pipe Canal	
17	305+550	BHS	SSNNL underground pipe Canal	
18	306+380	BHS	SSNNL underground pipe Canal	
19	306+480	BHS	Pipe line Crossing	
20	306+760	BHS	Pipe line Crossing	
21	306+800	BHS	Pipe line Crossing	
22	306+810	BHS	SSNNL underground pipe Canal	
23	307+185	BHS	Pipe line Crossing	
24	307+510	BHS	SSNNL underground pipe Canal	
25	307+697	BHS	Canal	
26	307+734	BHS	Canal	
27	307+778	BHS	Canal	
28	308+270	BHS	SSNNL underground pipe Canal	
29	309+110	BHS	SSNNL underground pipe Canal	
30	309+819	BHS	Canal	
31	309+853	BHS	Canal	
32	309+858	BHS	Canal	
33	310+710	BHS	SSNNL underground pipe Canal	
34	311+250	BHS	SSNNL underground pipe Canal	
35	311+490	BHS	SSNNL underground pipe Canal	
36	311+790	BHS	Pipe line Crossing	
37	311+840	BHS	Pipe line Crossing	
38	312+280	BHS	Pipe line Crossing	
39	312+840	BHS	Pipe line Crossing	
40	312+940	BHS	Pipe line Crossing	
41	313+055	BHS	Canal	
42	313+070	BHS	Pipe line Crossing	
43	313+080	BHS	SSNNL underground pipe Canal	
44	313+210	BHS	Pipe line Crossing	
45	313+250	BHS	Pipe line Crossing	
46	313+420	LHS	Well	
47	313+550	BHS	Pipe line Crossing	
48	313+853	BHS	Canal	
49	314+890	BHS	SSNNL underground pipe Canal	
50	315+225	BHS	Canal	
51	315+620	BHS	Pipe line Crossing	
52	316+558	BHS	Canal	
53	316+590	BHS	SSNNL underground pipe Canal	
54	317+020	BHS	Pipe line Crossing	
55	318+020	BHS	Pipe line Crossing	
56	318+586	BHS	Canal	
57	318+650	BHS	Pipe line Crossing	
58	318+660	LHS	Well	
59	318+840	BHS	Gujarat Water Supply & Sewerage Pipe line	

Details of Water Pipe Lines/Bore well/Canal Crossing*Appendix-1C*

SR. NO.	CHAINAGE	SIDE	TYPE	REMARKS
60	318+858	BHS	Canal	
61	319+675	BHS	SSNNL underground pipe Canal	
62	322+495	BHS	SSNNL underground pipe Canal	
63	322+750	BHS	Canal	
64	322+880	BHS	SSNNL underground pipe Canal	

Details of Gas Pipe Lines*Appendix-1D*

SR. NO.	Chainage	SIDE	TYPE	REMARKS
1	296+450	BHS	GAIL Gas Pipe line	
2	304+450	BHS	GAIL Gas Pipe line	
3	309+090	BHS	GAIL Gas Pipe line	
4	310+752	BHS	GSPL Gas Pipe line	

Existing Crop Details						
Sl.	Chainge		Side	Length in Km	Description of Crop	Remark
	From	To				
1	315+040	315+150	BHS	0.110	Cotton	
2	315+150	315+260	BHS	0.110	Red Gram	
3	315+260	315+340	BHS	0.080	Cotton	
4	315+340	315+700	BHS	0.360	Cotton	
5	320+820	321+050	BHS	0.230	Cotton	
6	321+050	321+125	BHS	0.075	Cotton	
7	321+125	321+160	BHS	0.035	Red Gram	
Total Length				1.000	Km	

Project	: Construction of Eight lane Vadodara Kim Expressway from Km. 292.000 to Km. 323.000 (Manubar to Sanpa section of Vadodara Mumbai Expressway) in State of Gujarat under NHDP Phase - VI on Hybrid Annuity Mode (Phase IA - Package III)
Client	: National Highways Authority Of India
Independent Engineer	:Aarvee Associates Architects Engineers & Consultant Pvt. Ltd.
CONCESSIONAIRE	: Patel Vadodara Kim Expressway Private Limited
EPC CONTRACTOR	: Patel Infrastructure Limited

MONTHLY PROGRESS REPORT

MONTH OF MARCH- 2019

Sr. No.	Name of Test	Testing Method	Frequency of Test	Specification Requirements	Number of Tests Conducted									Remarks
					Up To Previous Month			This Month			Total Upto Date			
					Passed	Failed	Total No. of Test	Passed	Failed	Total No. of Test	Passed	Failed	Cum. No. of Test	
OGL & Cutting soil														
1	Free Swell Index	IS 2720 Part 40	2 test per 3000 m ³	50 % Max	0	0	0	24	0	24	24	0	24	
2	Grain Size Analysis	IS 2720 Part 4	2 test per 3000 m ³	-	0	0	0	23	0	23	23	0	23	
3	Plasticity Index	IS 2720 Part 5	2 test per 3000 m ³	L.L.= Not>50 %,PI =Not> 25 %	0	0	0	23	0	23	23	0	23	
4	Max. Dry Density	IS 2720 Part 8	2 test per 3000 m ³	Up to 3m 1.52 gm./cc	0	0	0	24	0	24	24	0	24	
5	CBR	IS 2720 Part 16	1 test as required	Min. 8 % or as per design	0	0	0	0	0	0	0	0	0	
6	Density of Comp.Layer	IS 2720 Part 28	1 set of 10 tests/ 3000 m ²	90-95 % of lab MDD	200	20	220	4690	45	4735	4890	65	4955	
Borrow Area (Embankment & Subgrade)														
1	Free Swell Index	IS 2720 Part 40	2 test per 3000 m ³	50 % Max	70	0	70	137	0	137	207	0	207	
2	Grain Size Analysis	IS 2720 Part 4	2 test per 3000 m ³	-	70	0	70	137	0	137	207	0	207	
3	Plasticity Index	IS 2720 Part 5	2 test per 3000 m ³	L.L.= Not>50 %,PI =Not> 25 %	70	0	70	137	0	137	207	0	207	
4	Max. Dry Density	IS 2720 Part 8	2 test per 3000 m ³	Up to 3m 1.52 gm./cc More than 3m 1.60 gm./cc	70	0	70	137	0	137	207	0	207	
5	CBR	IS 2720 Part 16	1 test per 3000 m ³	Min. 8 % as per design	2	0	2	0	0	0	2	0	2	
Earthwork Field test														
1	Density of Comp.Layer (Emb.)	IS 2720 Part 28	1 set of 10 tests per 3000 m ²	95% of Lab MDD	160	10	170	8070	132	0	8230	142	8372	
2	Density of Comp.Layer (Sub grade & Earthen shoulder)	IS 2720 Part 28	1 set of 10 tests per 2000 m ²	97% of Lab MDD	0	0	0	0	0	0	0	0	0	
GSB														
1	Sieve Analysis		1 Test /400M ²	As per MORT&H Table 400-1	5	0	0	0	0	0	5	0	5	
2	Plasticity Index	IS 2720 Part 5	1 Test /400M ²	LL=Not>25% PI=Not>6%	5	0	0	0	0	0	5	0	5	
3	Max. Dry Density	IS 2720 Part 8	1 TEST PER SOURCE		1	0	0	0	0	0	1	0	1	
4	CBR	IS 2720 Part 16	As Required	30% Min.	1	0	0	0	0	0	1	0	1	
5	Water Absorption	IS 2386 Part 3	As Required	2% Max.	1	0	0	0	0	0	1	0	1	
6	AIV	IS 2386 (P-4) & IS 5640	As Required	40% Max	1	0	0	0	0	0	1	0	1	
7	Density of Comp.Layer	IS 2720 Part 28	1 Test /1000M ²	98% of Lab MDD	0	0	0	0	0	0	0	0	0	

Project	: Construction of Eight lane Vadodara Kim Expressway from Km. 292.000 to Km. 323.000 (Manubar to Sanpa section of Vadodara Mumbai Expressway) in State of Gujarat under NHDP Phase - VI on Hybrid Annuity Mode (Phase IA - Package III)
Client	: National Highways Authority Of India
Independent Engineer	:Aarvee Associates Architects Engineers & Consultant Pvt. Ltd.
CONCESSIONAIRE	: Patel Vadodara Kim Expressway Private Limited
EPC CONTRACTOR	: Patel Infrastructure Limited

MONTHLY PROGRESS REPORT

MONTH OF MARCH- 2019

Sr. No.	Name of Test	Testing Method	Frequency of Test	Specification Requirements	Number of Tests Conducted									Remarks
					Up To Previous Month			This Month			Total Upto Date			
					Passed	Failed	Total No. of Test	Passed	Failed	Total No. of Test	Passed	Failed	Cum. No. of Test	
PHYSICAL PROPERTIES OF AGGREGATE FOR CONCRETE														
1	Sieve Analysis of CA	IS 2386 Part 1	1 Test/Concreting Day	As per IS 383	10	0	0	13	0	13	23	0	23	
2	Sieve Analysis of FA	IS 2386 Part 1	1 Test/Concreting Day	As per IS 383	5	0	0	13	0	13	18	0	18	
3	Aggregate Impact Value	IS 2386 Part 4	1 Test/Concreting Day	As per IS 383	3	0	0	13	0	13	16	0	16	
4	Flakiness Index	IS 2386 Part 1	1 Test/Concreting Day	As per IS 383	3	0	0	13	0	13	16	0	16	
5	Silt Content	IS 383	As Required		5	0	0	22	0	22	27	0	27	
6	Specific Gravity & W A	IS 2386 PART 3	1 Test/Month		0	0	0	8	0	8	8	0	8	
Concrete Mix Design (cube sets)														
1	M15 7 Days	IS-516	18 Cubes	As per MoRT&H	0	0	0	0	0	0	0	0	0	
	28 Days				9	0	0	0	0	0	9	0	9	
2	M20 Kerb 7 Days				0	0	0	0	0	0	0	0	0	
	28 Days				0	0	0	0	0	0	0	0	0	
3	M20 7 Days				0	0	0	0	0	0	0	0	0	
	28 Days				9	0	0	0	0	0	9	0	9	
4	M25 7 Days				0	0	0	0	0	0	0	0	0	
	28 Days				9	0	0	0	0	0	9	0	9	
5	M30 7 Days				0	0	0	0	0	0	0	0	0	
	28 Days				9	0	0	0	0	0	9	0	9	
6	M35 7 Days				0	0	0	0	0	0	0	0	0	
	28 Days				9	0	0	0	0	0	9	0	9	
7	M35 RE block 7 Days				0	0	0	0	0	0	0	0	0	
	28 Days				0	0	0	0	0	0	0	0	0	
8	M40 7 Days				0	0	0	0	0	0	0	0	0	
	28 Days				9	0	0	0	0	0	9	0	9	
9	M45 7 Days				0	0	0	0	0	0	0	0	0	
	28 Days				0	0	0	0	0	0	0	0	0	
10	M50 7 Days	0	0	0	0	0	0	0	0	0				
	28 Days	0	0	0	0	0	0	0	0	0				

Project	: Construction of Eight lane Vadodara Kim Expressway from Km. 292.000 to Km. 323.000 (Manubar to Sanpa section of Vadodara Mumbai Expressway) in State of Gujarat under NHDP Phase - VI on Hybrid Annuity Mode (Phase IA - Package III)
Client	: National Highways Authority Of India
Independent Engineer	:Aarvee Associates Architects Engineers & Consultant Pvt. Ltd.
CONCESSIONAIRE	: Patel Vadodara Kim Expressway Private Limited
EPC CONTRACTOR	: Patel Infrastructure Limited

MONTHLY PROGRESS REPORT

MONTH OF MARCH- 2019

Sr. No.	Name of Test	Testing Method	Frequency of Test	Specification Requirements	Number of Tests Conducted									Remarks
					Up To Previous Month			This Month			Total Upto Date			
					Passed	Failed	Total No. of Test	Passed	Failed	Total No. of Test	Passed	Failed	Cum. No. of Test	
11	M40 PQC 7 Days	IS-516	36 cubes & 30 beams	As per MoRT&H	0	0	0	0	0	0	0	0	0	
	28 Days				0	0	0	0	0	0	0	0	0	
12	M40 PQC Fl. Strength 7 Days	IS-516	36 cubes & 30 beams	As per MoRT&H	0	0	0	0	0	0	0	0	0	
	28 Days				0	0	0	0	0	0	0	0	0	
13	DLC 7 Days	IS-516	10 cubes	As per MoRT&H	0	0	0	0	0	0	0	0	0	
Field Concrete (cube sets)														
1	M15 7 Days	IS-516	1 test - 0-5 M3 2test - 6-15 m3 3test - 16-30 m3 4 test - 31- 50 m3 +1 test for every 50m3 concrete	As per MoRT&H	0	0	0	27	0	27	27	0	27	
	28 Days				4	0	0	9	0	9	13	0	13	
2	M20 Kerb 7 Days	IS-516	1 test - 0-5 M3 2test - 6-15 m3 3test - 16-30 m3 4 test - 31- 50 m3 +1 test for every 50m3 concrete	As per MoRT&H	0	0	0	0	0	0	0	0	0	
	28 Days				0	0	0	0	0	0	0	0	0	
3	M25 7 Days	IS-516	1 test - 0-5 M3 2test - 6-15 m3 3test - 16-30 m3 4 test - 31- 50 m3 +1 test for every 50m3 concrete	As per MoRT&H	0	0	0	0	0	0	0	0	0	
	28 Days				0	0	0	0	0	0	0	0	0	
4	M30 7 Days	IS-516	1 test - 0-5 M3 2test - 6-15 m3 3test - 16-30 m3 4 test - 31- 50 m3 +1 test for every 50m3 concrete	As per MoRT&H	0	0	0	2	0	2	2	0	2	
	28 Days				0	0	0	0	0	0	0	0	0	
5	M35 7 Days	IS-516	1 test - 0-5 M3 2test - 6-15 m3 3test - 16-30 m3 4 test - 31- 50 m3 +1 test for every 50m3 concrete	As per MoRT&H	0	0	0	0	0	0	0	0	0	
	28 Days				0	0	0	0	0	0	0	0	0	
6	M35 Pile 7 Days	IS-516	1 test - 0-5 M3 2test - 6-15 m3 3test - 16-30 m3 4 test - 31- 50 m3 +1 test for every 50m3 concrete	As per MoRT&H	0	0	0	0	0	0	0	0	0	
	28 Days				41	0	0	0	0	0	41	0	0	
7	M35 RE block 7 Days	IS-516	1 test - 0-5 M3 2test - 6-15 m3 3test - 16-30 m3 4 test - 31- 50 m3 +1 test for every 50m3 concrete	As per MoRT&H	0	0	0	0	0	0	0	0	0	
	28 Days				0	0	0	0	0	0	0	0	0	
8	M40 7 Days	IS-516	1 test - 0-5 M3 2test - 6-15 m3 3test - 16-30 m3 4 test - 31- 50 m3 +1 test for every 50m3 concrete	As per MoRT&H	0	0	0	0	0	0	0	0	0	
	28 Days				0	0	0	0	0	0	0	0	0	
9	M45 7 Days	IS-516	1 test - 0-5 M3 2test - 6-15 m3 3test - 16-30 m3 4 test - 31- 50 m3 +1 test for every 50m3 concrete	As per MoRT&H	0	0	0	0	0	0	0	0	0	
	28 Days				0	0	0	0	0	0	0	0	0	
10	M50 7 Days	IS-516	1 test - 0-5 M3 2test - 6-15 m3 3test - 16-30 m3 4 test - 31- 50 m3 +1 test for every 50m3 concrete	As per MoRT&H	0	0	0	0	0	0	0	0	0	
	28 Days				0	0	0	0	0	0	0	0	0	

Project	: Construction of Eight lane Vadodara Kim Expressway from Km. 292.000 to Km. 323.000 (Manubar to Sanpa section of Vadodara Mumbai Expressway) in State of Gujarat under NHDP Phase - VI on Hybrid Annuity Mode (Phase IA - Package III)
Client	: National Highways Authority Of India
Independent Engineer	:Aarvee Associates Architects Engineers & Consultant Pvt. Ltd.
CONCESSIONAIRE	: Patel Vadodara Kim Expressway Private Limited
EPC CONTRACTOR	: Patel Infrastructure Limited

MONTHLY PROGRESS REPORT

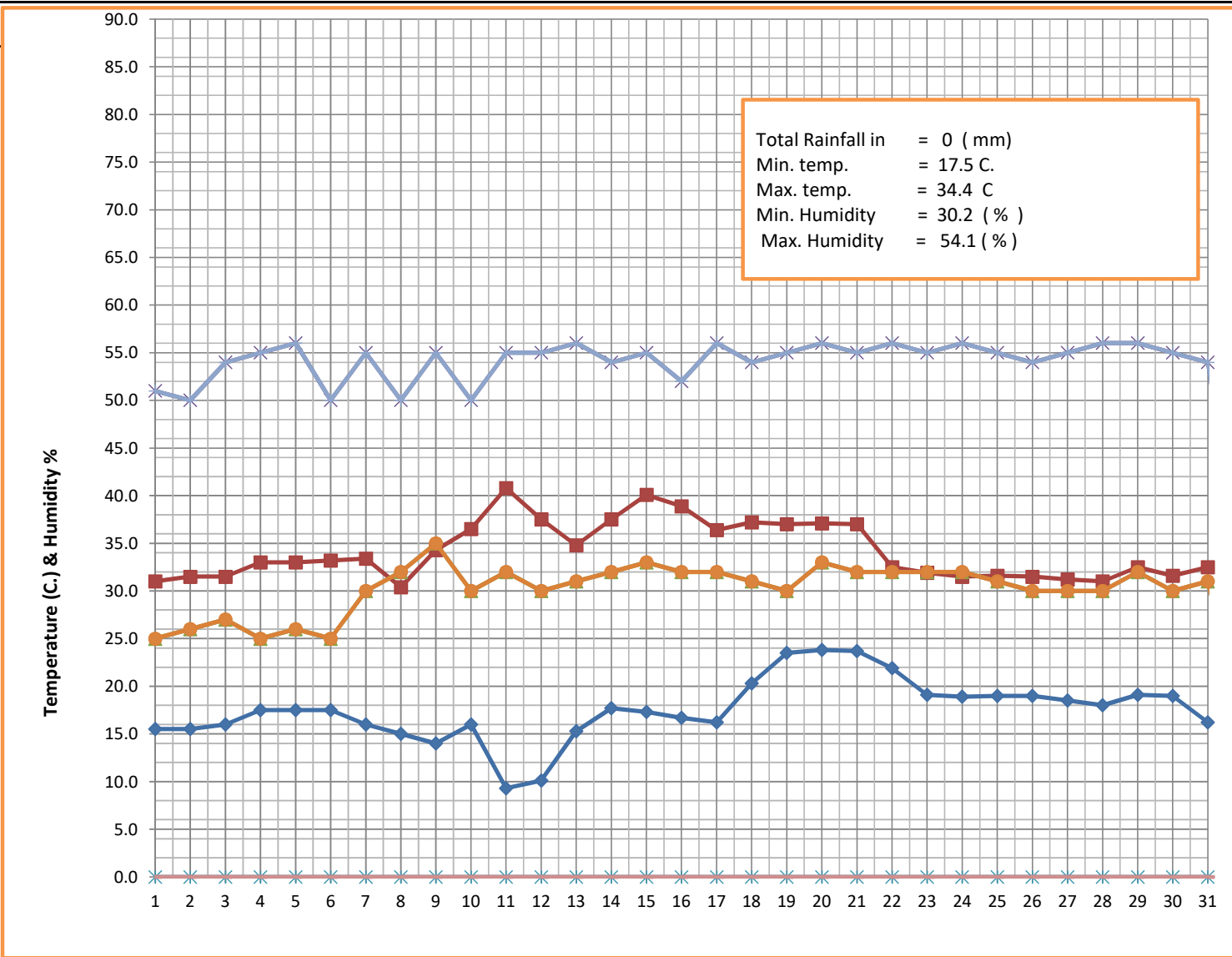
MONTH OF MARCH- 2019

Sr. No.	Name of Test	Testing Method	Frequency of Test	Specification Requirements	Number of Tests Conducted									Remarks	
					Up To Previous Month			This Month			Total Upto Date				
					Passed	Failed	Total No. of Test	Passed	Failed	Total No. of Test	Passed	Failed	Cum. No. of Test		
11	M40 PQC 7 Days	IS-516	1 test of 2 cubes & 2beams for 150 m3 or Min. 6 cubes & 6 beams for the day	As per MoRT&H	0	0	0	0	0	0	0	0	0		
	28 Days				0	0	0	0	0	0	0	0	0		
12	M40 PQC F.S 7 Days				0	0	0	0	0	0	0	0	0	0	
	28 Days				0	0	0	0	0	0	0	0	0	0	
13	DLC 7 Days	IS-516	1set of 3cubes for 1000 m2	Asper MoRT&H	0	0	0	0	0	0	0	0	0		
14	DLC FDD	IS 2720 Part 28	1 Test /2000M ²	98% of Ref. Density	0	0	0	0	0	0	0	0	0		
Cement															
1	Fineness	IS 4031	1 Test/Week		5	0	0	5	0	5	10	0	10		
2	Consistency	IS 4031	1 Test/Week		5	0	0	5	0	5	10	0	10		
3	Setting Time	IS 4031	1 Test/Week		5	0	0	5	0	5	10	0	10		
4	Soundness	IS 4031	1 Test/Week		0	0	0	0	0	0	0	0	0		
5	Compressive Strength	IS 4031	1 Test/Week												
	a) 3 Days		01 set = 3 Cube		5	0	0	4	0	4	9	0	9		
	b) 7 Days		01 set = 3 Cube		4	0	0	3	0	3	7	0	7		
	c) 28 Days		01 set = 3 Cube		3	0	0	1	0	1	4	0	4		

Construction of Eight lane Vadodara Kim Expressway from Km. 292.00 to km. 323.00 (Manubar to Sanpa Section of Vadodara Mumbai Expressway) in the State of Gujarat under NHDP Phase VI on Hybrid Annuity Mode (Phase IA- Package-III)

WEATHER REPORT (Month of March - 2019)

Sl. No.	Date	Temperature C		Humidity %		Rainfall (mm)
		Min. Temp. (°C)	Max. Temp. (°C)	Min.	Max.	
1	01.03.19	15.5	31.0	25.0	51.0	0.0
2	02.03.19	15.5	31.5	26.0	50.0	0.0
3	03.03.19	16.0	31.5	27.0	54.0	0.0
4	04.03.19	17.5	33.0	25.0	55.0	0.0
5	05.03.19	17.5	33.0	26.0	56.0	0.0
6	06.03.19	17.5	33.2	25.0	50.0	0.0
7	07.03.19	16.0	33.4	30.0	55.0	0.0
8	08.03.19	15.0	30.4	32.0	50.0	0.0
9	09.03.19	14.0	34.3	35.0	55.0	0.0
10	10.03.19	16.0	36.5	30.0	50.0	0.0
11	11.03.19	9.3	40.8	32.0	55.0	0.0
12	12.03.19	10.1	37.5	30.0	55.0	0.0
13	13.03.19	15.3	34.8	31.0	56.0	0.0
14	14.03.19	17.7	37.5	32.0	54.0	0.0
15	15.03.19	17.3	40.1	33.0	55.0	0.0
16	16.03.19	16.7	38.9	32.0	52.0	0.0
17	17.03.19	16.2	36.4	32.0	56.0	0.0
18	18.03.19	20.3	37.2	31.0	54.0	0.0
19	19.03.19	23.5	37.0	30.0	55.0	0.0
20	20.03.19	23.8	37.1	33.0	56.0	0.0
21	21.03.19	23.7	37.0	32.0	55.0	0.0
22	22.03.19	21.9	32.5	32.0	56.0	0.0
23	23.03.19	19.1	31.9	32.0	55.0	0.0
24	24.03.19	18.9	31.5	32.0	56.0	0.0
25	25.03.19	19.0	31.6	31.0	55.0	0.0
26	26.03.19	19.0	31.5	30.0	54.0	0.0
27	27.03.19	18.5	31.2	30.0	55.0	0.0
28	28.03.19	18.0	31.0	30.0	56.0	0.0
29	29.03.19	19.1	32.5	32.0	56.0	0.0
30	30.03.19	19.0	31.6	30.0	55.0	0.0
31	31.03.19	16.2	32.5	31.0	54.0	0.0



Drawing Status MNB

Sr. no	Schedule Chainage (Km)		R0	R1	R2	R3	R4	Remark
1	294+085	GAD	Concessionaire Submission Letter No. and Date	#21 on 22.10.2018	#11 on 20.02.2019			
			IE's Comment Letter No. and Date	#52 on 02.02.2019				
		Geotech Investigation Report	Concessionaire Submission Letter No. and Date					
			IE's Comment Letter No. and Date					
		Hydrology Report	Concessionaire Submission Letter No. and Date					
			IE's Comment Letter No. and Date					
		Foundation	Concessionaire Submission Letter No. and Date			#11 on 20.02.2019		
			IE's Comment Letter No. and Date					
		Substructure	Concessionaire Submission Letter No. and Date			#11 on 20.02.2019		
			IE's Comment Letter No. and Date					
Superstructure	Concessionaire Submission Letter No. and Date			#11 on 20.02.2019				
	IE's Comment Letter No. and Date							
2	296+432	GAD	Concessionaire Submission Letter No. and Date	#37 on 12.12.2018	#28 on 28.03.2019			
			IE's Comment Letter No. and Date					
		Geotech Investigation Report	Concessionaire Submission Letter No. and Date			#28 on 28.03.2019		
			IE's Comment Letter No. and Date					
		Hydrology Report	Concessionaire Submission Letter No. and Date			#28 on 28.03.2019		
			IE's Comment Letter No. and Date					
		Foundation	Concessionaire Submission Letter No. and Date			#28 on 28.03.2019		
			IE's Comment Letter No. and Date					
		Substructure	Concessionaire Submission Letter No. and Date	#37 on 12.12.2018		#28 on 28.03.2019		
			IE's Comment Letter No. and Date					
Superstructure	Concessionaire Submission Letter No. and Date	#37 on 12.12.2018		#28 on 28.03.2019				
	IE's Comment Letter No. and Date							
3	297+472	GAD	Concessionaire Submission Letter No. and Date	# 17 on 28.02.2019				
			IE's Comment Letter No. and Date					
		Geotech Investigation Report	Concessionaire Submission Letter No. and Date	# 17 on 28.02.2019				
			IE's Comment Letter No. and Date					
		Hydrology Report	Concessionaire Submission Letter No. and Date					
			IE's Comment Letter No. and Date					
		Foundation	Concessionaire Submission Letter No. and Date	# 17 on 28.02.2019				
			IE's Comment Letter No. and Date					
		Substructure	Concessionaire Submission Letter No. and Date	# 17 on 28.02.2019				
			IE's Comment Letter No. and Date					
Superstructure	Concessionaire Submission Letter No. and Date	# 17 on 28.02.2019						
	IE's Comment Letter No. and Date							
4	297+500,	GAD	Concessionaire Submission Letter No. and Date	# 114 on 14.03.2019	#25 on 26.03.2019			
			IE's Comment Letter No. and Date					
		Geotech Investigation Report	Concessionaire Submission Letter No. and Date	# 114 on 14.03.2019		#25 on 26.03.2019		
			IE's Comment Letter No. and Date					
		Hydrology Report	Concessionaire Submission Letter No. and Date	# 114 on 14.03.2019		#25 on 26.03.2019		
			IE's Comment Letter No. and Date					
		Foundation	Concessionaire Submission Letter No. and Date	# 114 on 14.03.2019		#25 on 26.03.2019		
			IE's Comment Letter No. and Date					
		Substructure	Concessionaire Submission Letter No. and Date	# 114 on 14.03.2019		#25 on 26.03.2019		
			IE's Comment Letter No. and Date					
Superstructure	Concessionaire Submission Letter No. and Date	# 114 on 14.03.2019		#25 on 26.03.2019				
	IE's Comment Letter No. and Date							

Drawing Status
MNB

5	304+450,	GAD	Concessionaire Submission Letter No. and Date		# 119 on 18.03.2019					
			IE's Comment Letter No. and Date							
		Geotech Investigation Report	Concessionaire Submission Letter No. and Date		# 119 on 18.03.2019					
			IE's Comment Letter No. and Date							
		Hydrology Report	Concessionaire Submission Letter No. and Date		# 119 on 18.03.2019					
			IE's Comment Letter No. and Date							
		Foundation	Concessionaire Submission Letter No. and Date		# 119 on 18.03.2019					
			IE's Comment Letter No. and Date							
		Substructure	Concessionaire Submission Letter No. and Date		# 119 on 18.03.2019					
			IE's Comment Letter No. and Date							
		Superstructure	Concessionaire Submission Letter No. and Date	# 16 on 16.10.2018	# 119 on 18.03.2019					
			IE's Comment Letter No. and Date							
		6	307+731	GAD	Concessionaire Submission Letter No. and Date	# 19 on 02.03.2019	# 27 on 27.03.2019			
					IE's Comment Letter No. and Date					
Geotech Investigation Report	Concessionaire Submission Letter No. and Date			# 19 on 02.03.2019	# 27 on 27.03.2019					
	IE's Comment Letter No. and Date									
Hydrology Report	Concessionaire Submission Letter No. and Date				# 27 on 27.03.2019					
	IE's Comment Letter No. and Date									
Foundation	Concessionaire Submission Letter No. and Date			# 19 on 02.03.2019	# 27 on 27.03.2019					
	IE's Comment Letter No. and Date									
Substructure	Concessionaire Submission Letter No. and Date			# 19 on 02.03.2019	# 27 on 27.03.2019					
	IE's Comment Letter No. and Date									
Superstructure	Concessionaire Submission Letter No. and Date			# 19 on 02.03.2019	# 27 on 27.03.2019					
	IE's Comment Letter No. and Date									
7	309+840			GAD	Concessionaire Submission Letter No. and Date	# 14 on 21.10.2018	HO# 14 on 21.02.2019			
					IE's Comment Letter No. and Date					
		Geotech Investigation Report	Concessionaire Submission Letter No. and Date							
			IE's Comment Letter No. and Date							
		Hydrology Report	Concessionaire Submission Letter No. and Date							
			IE's Comment Letter No. and Date							
		Foundation	Concessionaire Submission Letter No. and Date		HO# 14 on 21.02.2019					
			IE's Comment Letter No. and Date							
		Substructure	Concessionaire Submission Letter No. and Date	# 14 on 21.10.2018	HO# 14 on 21.02.2019					
			IE's Comment Letter No. and Date							
		Superstructure	Concessionaire Submission Letter No. and Date	# 14 on 21.10.2018	HO# 14 on 21.02.2019					
			IE's Comment Letter No. and Date							
		8	313+835	GAD	Concessionaire Submission Letter No. and Date		# 109 on 11.03.2019	# 24 on 26.03.2019		
					IE's Comment Letter No. and Date					
Geotech Investigation Report	Concessionaire Submission Letter No. and Date				# 109 on 11.03.2019	# 24 on 26.03.2019				
	IE's Comment Letter No. and Date									
Hydrology Report	Concessionaire Submission Letter No. and Date				# 109 on 11.03.2019	# 24 on 26.03.2019				
	IE's Comment Letter No. and Date									
Foundation	Concessionaire Submission Letter No. and Date				# 109 on 11.03.2019	# 24 on 26.03.2019				
	IE's Comment Letter No. and Date									
Substructure	Concessionaire Submission Letter No. and Date				# 109 on 11.03.2019	# 24 on 26.03.2019				
	IE's Comment Letter No. and Date									
Superstructure	Concessionaire Submission Letter No. and Date			# 16 on 16.10.2018	# 109 on 11.03.2019	# 24 on 26.03.2019				
	IE's Comment Letter No. and Date									

**Drawing Status
MNB**

9	314+314	GAD	Concessionaire Submission Letter No. and Date	# 110 on 11.03.2018						
			IE's Comment Letter No. and Date							
		Geotech Investigation Report	Concessionaire Submission Letter No. and Date	# 110 on 11.03.2018						
			IE's Comment Letter No. and Date							
		Hydrology Report	Concessionaire Submission Letter No. and Date	# 110 on 11.03.2018						
			IE's Comment Letter No. and Date							
		Foundation	Concessionaire Submission Letter No. and Date	# 110 on 11.03.2018						
			IE's Comment Letter No. and Date							
		Substructure	Concessionaire Submission Letter No. and Date	# 110 on 11.03.2018						
			IE's Comment Letter No. and Date							
		Superstructure	Concessionaire Submission Letter No. and Date	# 110 on 11.03.2018						
			IE's Comment Letter No. and Date							
		10	309+100, 310+752,	GAD	Concessionaire Submission Letter No. and Date					
					IE's Comment Letter No. and Date					
Geotech Investigation Report	Concessionaire Submission Letter No. and Date									
	IE's Comment Letter No. and Date									
Hydrology Report	Concessionaire Submission Letter No. and Date									
	IE's Comment Letter No. and Date									
Foundation	Concessionaire Submission Letter No. and Date									
	IE's Comment Letter No. and Date									
Substructure	Concessionaire Submission Letter No. and Date									
	IE's Comment Letter No. and Date									
Superstructure	Concessionaire Submission Letter No. and Date									
	IE's Comment Letter No. and Date									

MJB

Sr. no	Schedule Chainage (Km)		R0	R1	R2	R3	R4	Remark	
1	302+732	GAD	Concessionaire Submission Letter No. and Date	#24 on 14.11.2018	# 10 on 07.02.2019	# 13 on 21.02.2019	# 21 on 06.03.2019	# 29 on 28.03.2019	
			IE's Comment Letter No. and Date						
		Geotech Investigation Report	Concessionaire Submission Letter No. and Date			# 13 on 21.02.2019	# 21 on 06.03.2019	# 29 on 28.03.2019	
			IE's Comment Letter No. and Date						
		Hydrology Report	Concessionaire Submission Letter No. and Date			# 13 on 21.02.2019	# 21 on 06.03.2019	# 29 on 28.03.2019	
			IE's Comment Letter No. and Date						
		Test Pile	Concessionaire Submission Letter No. and Date		# 10 on 07.02.2019				# 29 on 28.03.2019
			IE's Comment Letter No. and Date						
		Foundation	Concessionaire Submission Letter No. and Date	#24 on 14.11.2018	# 10 on 07.02.2019	# 13 on 21.02.2019	# 21 on 06.03.2019	# 29 on 28.03.2019	
			IE's Comment Letter No. and Date						
		Substructure Abutment	Concessionaire Submission Letter No. and Date	#24 on 14.11.2018	# 10 on 07.02.2019	# 13 on 21.02.2019	# 21 on 06.03.2019	# 29 on 28.03.2019	
			IE's Comment Letter No. and Date						
		Substructure Pier	Concessionaire Submission Letter No. and Date	#24 on 14.11.2018	# 10 on 07.02.2019	# 13 on 21.02.2019	# 21 on 06.03.2019	# 29 on 28.03.2019	
			IE's Comment Letter No. and Date						
		Superstructure	Concessionaire Submission Letter No. and Date	#24 on 14.11.2018	# 10 on 07.02.2019	# 13 on 21.02.2019	# 21 on 06.03.2019	# 29 on 28.03.2019	
			IE's Comment Letter No. and Date						

**Drawing Status
MNB**

2	318+875	GAD	Concessionaire Submission Letter No. and Date								
			IE's Comment Letter No. and Date								
		Test Pile	Concessionaire Submission Letter No. and Date	# 11 on 11.09.2019							
			IE's Comment Letter No. and Date								
		Geotech Investigation Report	Concessionaire Submission Letter No. and Date								
			IE's Comment Letter No. and Date								
		Hydrology Report	Concessionaire Submission Letter No. and Date								
			IE's Comment Letter No. and Date								
		Foundation	Concessionaire Submission Letter No. and Date								
			IE's Comment Letter No. and Date								
		Substructure	Concessionaire Submission Letter No. and Date	#37 on 12.12.2018							
			IE's Comment Letter No. and Date								
		Substructure Pier	Concessionaire Submission Letter No. and Date								
			IE's Comment Letter No. and Date								
		Superstructure	Concessionaire Submission Letter No. and Date	#37 on 12.12.2018							
			IE's Comment Letter No. and Date								
		3	321+280	GAD	Concessionaire Submission Letter No. and Date	HO #5 on 02.02.2019		#20 on 06.03.2019	#30 on 28.03.2019		
					IE's Comment Letter No. and Date	Need to Coordinate with IE					
Test Pile	Concessionaire Submission Letter No. and Date			# 13 on 24.09.2018		#20 on 06.03.2019	#30 on 28.03.2019				
	IE's Comment Letter No. and Date										
Geotech Investigation Report	Concessionaire Submission Letter No. and Date			HO #5 on 02.02.2019		#20 on 06.03.2019	#30 on 28.03.2019				
	IE's Comment Letter No. and Date										
Hydrology Report	Concessionaire Submission Letter No. and Date			HO #5 on 02.02.2019		#20 on 06.03.2019	#30 on 28.03.2019				
	IE's Comment Letter No. and Date										
Foundation	Concessionaire Submission Letter No. and Date			HO #5 on 02.02.2019		#20 on 06.03.2019	#30 on 28.03.2019				
	IE's Comment Letter No. and Date										
Substructure	Concessionaire Submission Letter No. and Date			HO #5 on 02.02.2019		#20 on 06.03.2019	#30 on 28.03.2019				
	IE's Comment Letter No. and Date										
Substructure Pier	Concessionaire Submission Letter No. and Date			HO #5 on 02.02.2019	HO #15 on 28.02.2019	#20 on 06.03.2019	#30 on 28.03.2019				
	IE's Comment Letter No. and Date										
Superstructure	Concessionaire Submission Letter No. and Date			#24 on 14.11.2018		#20 on 06.03.2019	#30 on 28.03.2019				
	IE's Comment Letter No. and Date										
ROB											
Sr. no	Schedule Chainage (Km)				R0	R1	R2	R3	R4	Remark	
1	293+050	GAD	Concessionaire Submission Letter No. and Date	GAD Approved							
			IE's Comment Letter No. and Date								
		Test Pile	Concessionaire Submission Letter No. and Date								
			IE's Comment Letter No. and Date								
		Geotech Investigation Report	Concessionaire Submission Letter No. and Date								
			IE's Comment Letter No. and Date								
		Hydrology Report	Concessionaire Submission Letter No. and Date								
			IE's Comment Letter No. and Date								
		Foundation	Concessionaire Submission Letter No. and Date								
			IE's Comment Letter No. and Date								
		Substructure	Concessionaire Submission Letter No. and Date								
			IE's Comment Letter No. and Date								
		Substructure Pier	Concessionaire Submission Letter No. and Date								
			IE's Comment Letter No. and Date								
		Superstructure	Concessionaire Submission Letter No. and Date								
			IE's Comment Letter No. and Date								

HPC (Total- 35 Nos.)

Sr. no	Schedule Chainage (Km)						R0	R1	R2	R3	R4	Remark
1	293+620	300+970	307+419	311+969	316+819	Concessionaire Submission Letter No. and Date	#16 on 12-10-2018					
2	294+420	301+520	307+969	312+679	317+470							
3	295+870	302+270	308+320	313+369	319+268							
4	296+720	302+578	308+794	313+812	319+969	IE's Coments Letter No. And Date	#5157 on 29.10.2018					
5	298+120	303+608	309+368	314+669	320+719							
6	298+819	304+069	310+119	315+719	322+294							
7	300+445	304+649	311+329	316+069	322+778							

Box Culvert (Total- 24 Nos.)

Sr. no	Schedule Chainage (Km)						R0	R1	R2	R3	R4	Remark
1	292+450	301+247	309+892			Concessionaire Submission Letter No. and Date	#16 on 12.10.2018	HO #7 on 04.02.2019				
2	294+750	303+403	314+148									
3	295+007	305+437	316+427									
4	295+585	307+709	316+582			IE's Coments Letter No. And Date	#2 dated 12.01.2018					
5	296+376	307+789	318+612									
6	299+800	309+030	322+750									
7	300+148	309+840										
	307+193	323+087				Concessionaire Submission Letter No. and Date	-					
	315+247					IE's Coments Letter No. And Date	-	#26 on 26.03.2019				

PUP/CUP (Total- 30 Nos.)

Sr. no	Schedule Chainage (Km)						R0	R1	R2	R3	R4	Remark
1	292+010	300+725	305+850	312+280	318+275	Concessionaire Submission Letter No. and Date	#21 on 22-10-2018	# 18 on 28.02.2019				
	295+170	301+790	306+250	313+075	319+580							
	296+150	302+350	306+850	314+850	320+330							
	297+220	303+245	309+550	315+870	320+825	IE's Coments Letter No. And Date	#5157 dated 29.10.2018	# 056 on 20.03.2019				
	297+900	304+170	310+480	317+100	322+550							
298+380	305+085	311+650	317+650									
2	299+100					Concessionaire Submission Letter No. and Date	#37 on 12.12.2018					

LVUP (Total- 7 Nos.)

Sr. no	Schedule Chainage (Km)						R0	R1	R2	R3	R4	Remark
1	293+895	311+073				Concessionaire Submission Letter No. and Date	#21 on 22-10-2018					
	294+550	316+563										
	301+240	321+700				IE's Coments Letter No. And Date	#84 on 15.02.2019					
	308+550											

VUP (Total- 3 Nos.)

Sr. no	Schedule Chainage (Km)						R0	R1	R2	R3	R4	Remark
1	295+575	312+720				Concessionaire Submission Letter No. and Date	#24 on 22-10-2018					
						IE's Coments Letter No. And Date	#53 on 02.02.2019					
2	303+830					Concessionaire Submission Letter No. and Date	#37 on 12.12.2018					
						IE's Coments Letter No. And Date	# 55 on 20.03.2019					

VOP (Total- 1 No.)

Sr. no	Schedule Chainage (Km)			R0	R1	R2	R3	R4	Remark	
1	307+193	GAD	Concessionaire Submission Letter No. and Date							
			IE's Comment Letter No. and Date							
		Pile Load Test	Concessionaire Submission Letter No. and Date	#9 on 06.02.2019						
			IE's Comment Letter No. and Date							
		Geotech Investigation Report	Concessionaire Submission Letter No. and Date	#9 on 06.02.2019						
			IE's Comment Letter No. and Date							
		Foundation	Concessionaire Submission Letter No. and Date							
			IE's Comment Letter No. and Date							
		Substructure	Concessionaire Submission Letter No. and Date							
			IE's Comment Letter No. and Date							
		Superstructure	Concessionaire Submission Letter No. and Date							
			IE's Comment Letter No. and Date							

Flyover (Total- 1 No.)

Sr. no	Schedule Chainage (Km)			R0	R1	R2	R3	R4	Remark	
1	299+375	GAD	Concessionaire Submission Letter No. and Date	# 21 on 22.10.2018						
			IE's Comment Letter No. and Date							
		Pile Load Test	Concessionaire Submission Letter No. and Date	# 11 on 11.09.2018						
			IE's Comment Letter No. and Date							
		Geotech Investigation Report	Concessionaire Submission Letter No. and Date							
			IE's Comment Letter No. and Date							
		Hydrology Report	Concessionaire Submission Letter No. and Date							
			IE's Comment Letter No. and Date							
		Foundation	Concessionaire Submission Letter No. and Date							
			IE's Comment Letter No. and Date							
		Substructure	Concessionaire Submission Letter No. and Date							
			IE's Comment Letter No. and Date							
		Superstructure	Concessionaire Submission Letter No. and Date							
			IE's Comment Letter No. and Date							

Outgoing Letters

Sr- No-	Date	Letter No-	Type of Correspondence	Subject of Correspondence
1	25.05.2018	PVKEPL/PIL/LOA/003/2018	LOA	LOA for Eight Lane Vadodara Kim Expressway - Pil
2	20.07.2018	PVKEPL /FPIPMC/WO/009/2018	WO	Conducting Project Cost Vetting Report - FP India Project Management Consultancy
		23		Cancel
3	14.11.2018	PVKEPL/IE/024/2018	D&D	Reg. Subm. of Structure D&Drawing of 2 MJB and 2 VUP -
4	16.11.2018	PVKEPL/HO/IE/025/2018		Submission of Costruction Methodology for Cast in-Situ Concrete Test Pile
5	17.11.2018	PIL/NHAI/VKE/026/2018	Source Approval	Submission of Company Profile & Credential of Aadhya Engineering Services for conduction pile load test of test pile for source approval.
5	19.11.2018	PVKEPL/HO/IE/027/2018	Obligations	Fulfillment of Obligations prior to commencement of Works
6	26.11.2018	PVKEPL/HO/IE/031/2018	Borrow Area	Reg. Proposal of Borrow Area
7	23.11.2018	PVKEPL/HO/IE/032/2018		Review of Highway Drawing and Design report
8	30.11.2018	PVKEPL/HO/IE/033/2018	Design	Submission of Cement concrete mix Design Report (M35) Piling Work
9	11.12.2018	PVKEPL/HO/IE/036/2018	Source Approval	Procurement of admixture from M/s kunal conschem pvt ltd & M/S BASF India ltd.
10	12.12.2018	PVKEPL/IE/037/2018	D&D	Regarding submission of structure design and Drawing
11	09.01.2019	PVKEPL/HO/VKE3/IE/038/2019	Source Approval	Request for source approval of Soil borrow areas
12	09.01.2019	PVKEPL/HO/VKE3/IE/039/2018	Source Approval	Request for source approval of Sand- 1 Mix Design Purpose
13	09.01.2019	PVKEPL/HO/VKE3/IE/040/2018	Source Approval	Request for source approval of Aggregates for Mix Design Purpose
14	09.01.2019	PVKEPL/HO/VKE3/IE/041/2019	Source Approval	Request for source approval of Admixture for Mix Design Purpose
15	09.01.2019	PVKEPL/HO/VKE3/IE/042/2019	Source Approval	Request for source approval of Water for Mix Design Purpose
16	16.01.2019	PVKEPL/HO/VKE3/IE/045/2019	Borrow Area	Source of Earth to be obtained from Borrow Area for use in Embankment/ Subgrade/ Median fillings. (BA-1)
17	16.01.2019	PVKEPL/HO/VKE3/IE/046/2019	Borrow Area	Source of Earth to be obtained from Borrow Area for use in Embankment/ Subgrade/ Median fillings. (BA-2)
18	16.01.2019	PVKEPL/HO/VKE3/IE/047/2019	Borrow Area	Source of Earth to be obtained from Borrow Area for use in Embankment/ Subgrade/ Median fillings. (BA-3)
19	22.01.2019	PVKEPL/HO/VKE3/IE/048/2019	Borrow Area	Source of Earth to be obtained from Borrow Area for use in Embankment/ Subgrade/ Median fillings. (BA-7)
20	22.01.2019	PVKEPL/HO/VKE3/IE/049/2019	Borrow Area	Source of Earth to be obtained from Borrow Area for use in Embankment/ Subgrade/ Median fillings. (BA-11)
		50		BLANK
21	23.01.2019	PVKEPL/HO/VKE3/IE/051/2019	Source Approval	Submission of Company profile and credentials for Mukesh A. Patel for Third Party test
22	23.01.2019	PVKEPL/HO/VKE3/IE/052/2019	Source Approval	Submission test report of NP-4 Hume Pipe-1200mm
23	23.01.2019	PVKEPL/HO/VKE3/IE/053/2019	Source Approval	submission of third party test report of Agg.20mm & 10mm for concreting
24	23.01.2019	PVKEPL/HO/VKE3/IE/054/2019	Source Approval	submission of third party test report of sand for concreting
25	23.01.2019	PVKEPL/HO/VKE3/IE/055/2019	Source Approval	submission of third party test report of admixture for concreting
26	23.01.2019	PVKEPL/HO/VKE3/IE/056/2019	Source Approval	submission of third party test report of admixture for concreting
27	23.01.2019	PVKEPL/HO/VKE3/IE/057/2019	Source Approval	submission of third party test report of Cement(OPC-53) for concreting
28	23.01.2019	PVKEPL/HO/VKE3/IE/058/2019	Source Approval	submission of third party test report of Cement(OPC-53) for concreting
29	23.01.2019	PVKEPL/HO/VKE3/IE/059/2019	Borrow Area	submission of third party test report of borrow area-4 soluble sulphate content
30	23.01.2019	PVKEPL/HO/VKE3/IE/060/2019	Borrow Area	submission of third party test report of borrow area-5 soluble sulphate content
31	23.01.2019	PVKEPL/HO/VKE3/IE/061/2019	Borrow Area	submission of third party test report of borrow area-8 soluble sulphate content
32	23.01.2019	PVKEPL/HO/VKE3/IE/062/2019	Source Approval	submission of third party test report of water for concreting
33	28.01.2019	PVKEPL/HO/VKE3/IE/063/2019	Borrow Area	Source of Earth to be obtained from Borrow Area for use in Embankment/ Subgrade/ Median fillings. (BA-4A)
34	28.01.2019	PVKEPL/HO/VKE3/IE/064/2019	Borrow Area	Source of Earth to be obtained from Borrow Area for use in Embankment/ Subgrade/ Median fillings. (BA-5)
35	28.01.2019	PVKEPL/HO/VKE3/IE/065/2019	Borrow Area	Source of Earth to be obtained from Borrow Area for use in Embankment/ Subgrade/ Median fillings. (BA-10)
36	28.01.2019	PVKEPL/HO/VKE3/IE/066/2019	QA/QC	Intimation for Pile Load Test on MJB at CH.321+253
37	28.01.2019	PVKEPL/HO/VKE3/IE/067/2019	Drawing	Additional copy of Design report and Drawing submitted prior to commence of your services
38	29.01.2019	PVKEPL/HO/VKE3/IE/068/2019	Survey	Submission of GPS co-ordinates, TBM List and Center Line Co-ordinates
39	29.01.2019	PVKEPL/VKE3/IE/069/2019	Survey	Submission of GPS co-ordinates, TBM List and Center Line Co-ordinates
40	29.01.2019	PVKEPL/HO/VKE3/IE/070/2019	Survey	Submission of GPS co-ordinates, TBM List and Center Line Co-ordinates
41	30.01.2019	PVKEPL/VKE3/IE/071/2019	Drawing	Typical Diversion Plan
42	30.01.2019	PVKEPL/VKE3/IE/072/2019	Source Approval	Submission of mix design for concreting with cement of Ultratech with cement of Ultratech and admixture of Kunal
43	30.01.2019	PVKEPL/VKE3/IE/073/2019	Source Approval	Submission of mix design for concreting with cement of Ultratech with cement of Ultratech and admixture of BASF
44	30.01.2019	PVKEPL/VKE3/IE/074/2019	Source Approval	Submission of Company profile and credentials of Gurukrupa Industries for procurement of Hume Pipe
45	31.01.2019	PVKEPL/VKE3/IE/077/2019	Utility Shifting	Estimates for lines for utility shifting work for Vadodara-Mumbai Expressway
46	31.01.2019	PVKEPL/VKE3/IE/078/2019	Source Approval	Submission of third party test report of cement (OPC-53) to be used for concreting
47	05.02.2019	PVKEPL/VKE3/IE/079/2019	QA/QC	Mix design of GSB as per MORTH & Table 401-Gr.1
48	07.02.2019	PVKEPL/VKE3/IE/080/2019	Source Approval	Company profile and credential of Fare Mate construction chemical of admixture
49	09.02.2019	PVKEPL/VKE3/IE/081/2019	Source Approval	Hume Pipe Testing NP4 (1200mm & 600mm)
50	18.02.2019	PVKEPL/VKE3/IE/082/2019	QA/QC	Submission of Construction methodology of construction embankment
51	18.02.2019	PVKEPL/VKE3/IE/084/2019	Borrow Area	Source of Earth to be obtained from Borrow Area for use in Embankment/ Subgrade/ Median fillings. (BA-2)
52	18.02.2019	PVKEPL/VKE3/IE/085/2019	Source Approval	Proposal for BA- 4,6 & 8 at Simarkha, Suthadara & Kelod
53	18.02.2019	PVKEPL/VKE3/IE/086/2019	Source Approval	Submission of joint inspection test report of HPC NP4 1200mm dia pipe
54	18.02.2019	PVKEPL/VKE3/IE/087/2019	Compliance	Source of Earth to be obtained from Borrow Area for use in Embankment/ Subgrade/ Median fillings. (BA-11)
55	18.02.2019	PVKEPL/VKE3/IE/088/2019	Compliance	Source of Earth to be obtained from Borrow Area for use in Embankment/ Subgrade/ Median fillings. (BA-5)

Sr- No-	Date	Letter No-	Type of Correspondence	Subject of Correspondence
56	18.02.2019	PVKEPL/VKE3/IE/089/2019	Compliance	Source of Earth to be obtained from Borrow Area for use in Embankment/ Subgrade/ Median fillings. (BA-10)
57	18.02.2019	PVKEPL/VKE3/IE/090/2019	Compliance	Source of Earth to be obtained from Borrow Area for use in Embankment/ Subgrade/ Median fillings. (BA-9)
58	18.02.2019	PVKEPL/VKE3/IE/091/2019	Compliance	Source of Earth to be obtained from Borrow Area for use in Embankment/ Subgrade/ Median fillings. (BA-1)
59	18.02.2019	PVKEPL/VKE3/IE/092/2019	Compliance	Source of Earth to be obtained from Borrow Area for use in Embankment/ Subgrade/ Median fillings. (BA-3)
60	23.02.2019	PVKEPL/VKE3/IE/093/2019	Compliance	Submission of Third party test report of Aggregates (20mm & 10mm) in Project Highway
61	23.02.2019	PVKEPL/VKE3/IE/094/2019	QA/QC	Submission of third party test report of sand
62	23.02.2019	PVKEPL/VKE3/IE/095/2019	QA/QC	Submission of third party test report of sand
63	26.02.2019	PVKEPL/VKE3/IE/096/2019	QA/QC	Submission of initial pipe load test result of FO at Ch-299+375
64	26.02.2019	PVKEPL/VKE3/IE/097/2019	QA/QC	Submission of initial pipe load test result of MJB at Ch-302+713
65	26.02.2019	PVKEPL/VKE3/IE/098/2019	QA/QC	Submission of initial pipe load test result of MJB at Ch-318+850
66	26.02.2019	PVKEPL/VKE3/IE/099/2019	QA/QC	Submission of initial pipe load test result of MJB at Ch-321+253
67	28.02.2019	PVKEPL/VKE3/IE/101/2019	Source Approval	Submission of Company Profile of MSP Steel & Power Ltd. as a one of the source of reinforced steel of material.
68	01.03.2019	PVKEPL/VKE3/IE/102/2019	Source Approval	Submission of Company Profile and Credentials for the Electrotherm (India) Ltd. for Source approval.
69	05.03.2019	PVKEPL/VKE3/IE/103/2019	Source Approval	Submission of Company profile and credentials of ConPLUS+ for HPC (1200mm & 600mm dia)
70	11.03.2019	PVKEPL/VKE3/SSNNL/104/2019		Construction of MNB across Canal
71	11.03.2019	PVKEPL/VKE3/SSNNL/105/2019		Construction work of Box Culvert across Canal on Vadodara-Mumbai Expressway
72	11.03.2019	PVKEPL/VKE3/SSNNL/106/2019		Construction work of Box Culvert across Canal on Vadodara-Mumbai Expressway
73	11.03.2019	PVKEPL/VKE3/IE/107/2019		Submission of GPS traversing, TBM List & Center line Coordinates of Project Highway
74	11.03.2019	PVKEPL/VKE3/IE/109/2019		Submission of Design & Drawing of Minor Bridge CH-313+809
75	11.03.2019	PVKEPL/VKE3/IE/110/2019		Submission of Design & Drawing of Minor Bridge CH-314+314
76	13.03.2019	PVKEPL/VKE3/IE/111/2019		Submission of Mix Design concreting with ultratech cement & BASF admixture-Reg
77	13.03.2019	PVKEPL/VKE3/IE/112/2019		Submission of Mix Design concreting with ultratech cement & Kunal admixture-Reg
78	14.03.2019	PVKEPL/VKE3/IE/113/2019		Submission of Co-ordinates of Center Line of VOP at CH-307+193
79	14.03.2019	PVKEPL/VKE3/IE/114/2019		Submission of Design & Drawing of MNB at CH-297+562
80	15.03.2019	PVKEPL/VKE3/IE/115/2019		Submission of Proposed location of Utility Duct along Project highway
81	15.03.2019	PVKEPL/VKE3/IE/116/2019		Submission of Video Recording
82	18.03.2019	PVKEPL/VKE3/IE/117/2019		Submission of Company profile of STP limited as one of the source for Chemical Material i.e., Admixtures
83	18.03.2019	PVKEPL/VKE3/IE/118/2019		Joint Site Inspection of testing of 1200mm dia Hume pipe at Ms Giriraj hume piep industries
84	18.03.2019	PVKEPL/VKE3/IE/119/2019		Submission of D&D for MNB over GAS pipeline at ch-304+454
85	20.03.2019	PVKEPL/VKE3/IE/120/2019		Submission of Company Profile of Gujarat Sidhee Cement Ltd. for procurement of Cement for source approval
86	20.03.2019	PVKEPL/VKE3/IE/121/2019		Submission of Company Profile of Saurashtra Cement Ltd. for procurement of Cement for source approval

Incomming Letters

Sr- No-	Date	Letter No-	Type of Correspondence	Subject of Correspondence
1	22-06-18	A/P/WC/GJ/14/17399		Survey in Dayadra to Nabipur road
2	26-10-18	AA/HW/VKEW/VK-III/2205/18-19/5116		Commencement of IE services
3	29-10-18	AA/HW/VKEW/VK-III/2205/18-19/5152	Obligation	Obligations prior to commencement of construction
4	29-10-18	AA/HW/VKEW/VK-III/2205/18-19/5157	Drawing	Design & drawing of 20BC & 35HPC
5	12-01-19	AA/VKEW/NHAI/001/18-19/MOBI.001		Joining of Team Leader in Project - Reg.
6	12-01-19	AA/VKE/PVKEPL/001/18-19/P&P/003	Drawing	Observations on Plan and Profile - Reg.
7	12-01-19	AA/VKE/PVKEPL/002/18-19/DESIGN REVIEW/009	Drawing	Submission of Box culverts design and drawings
8	21-01-19	AA/VKE/PVKEPL/003/18-19/USW/019		Estimates for lines for utility shifting work for Vadodara - Mumbai Expressway of Phase- IA for Package III
9	24-01-19	AA/VKE/NHAI/006/18-19/IE SERVICES/021		Allocation of Technical Staff in the Project
10	23-01-19	AA/VKE/CONCESSIONAIRE/001/18-19/QA&QC/020	RFI	Format for Request for Inspection (RFI)
11	31-01-19	AA/VKE/PVKEPL/005/18-19/Q&M/036	Borrow Area	Source of Earth to be obtained from Borrow Area for use in EmbankmentSubgradeMedian filling
12	31-01-19	AA/VKE/PVKEPL/005/18-19/Q&M/037	Borrow Area	Source of Earth to be obtained from Borrow Area for use in EmbankmentSubgradeMedian filling
13	31-01-19	AA/VKE/PVKEPL/005/18-19/Q&M/038	Borrow Area	Source of Earth to be obtained from Borrow Area for use in EmbankmentSubgradeMedian filling
14	31-01-19	AA/VKE/PVKEPL/005/18-19/Q&M/039	Borrow Area	Source of Earth to be obtained from Borrow Area for use in EmbankmentSubgradeMedian filling
15	31-01-19	AA/VKE/PVKEPL/005/18-19/Q&M/040	Borrow Area	Source of Earth to be obtained from Borrow Area for use in EmbankmentSubgradeMedian filling
16	31-01-19	AA/VKE/PVKEPL/005/18-19/Q&M/041	Borrow Area	Source of Earth to be obtained from Borrow Area for use in EmbankmentSubgradeMedian filling
17	31-01-19	AA/VKE/PVKEPL/005/18-19/Q&M/042	Borrow Area	Source of Earth to be obtained from Borrow Area for use in EmbankmentSubgradeMedian filling
18	01-02-19	ADO/HSD		HSD supply patel infrastructure ltd
19	02-02-19	AA/VKE/PVKEPL/011/18-19/Q&M/048	Source Approval	Approval of source of cement
20	02-02-19	AA/VKE/PVKEPL/012/18-19/Q&M/049	QA/QC	Submission of Third Party test report of Cement (OPC-53) to be used for concreting.
21	02-02-19	AA/VKE/PVKEPL/013/18-19/Q&M/050	Drawing	Submission of structure design & drawing of 1MNB, 1MUB, 1FLO, 7LYUP & 29PUP
22	02-02-19	AA/VKE/PVKEPL/014/18-19/Q&M/051	Drawing	Submission of concrete mix design report (M35) for piling work
23	02-02-19	AA/VKE/PVKEPL/015/18-19/Q&M/052	Drawing	Submission of structure design & drawing of 1MNB, 1MUB, 1FLO, 7LYUP & 29PUP
24	02-02-19	AA/VKE/PVKEPL/016/18-19/Q&M/053	Drawing	Submission of structure design and drawing of 2 MJB & 2 VUP
25	05-02-19	AA/VKE/PVKEPL/017/18-19/DESIGN REVIEW/054	Drawing	Submission of structure design and drawing (design report, GAD and Reinforcement Drawing) of 1MNB, 1MUB, 1FLO, 7LYUP and 29PUP
26	05-02-19	AA/VKE/PVKEPL/018/18-19/Q&M/062	Source Approval	REG APPROVAL OF SOURCE FOR ADMIXTURE from Kunal & BASF
27	12-02-19	AA/VKE/PVKEPL/019/18-19/Q&M/063	Borrow Area	Source of Earth to be obtained from Borrow Area for use in Embankment Subgrade Median filling
28	12-02-19	AA/VKE/PVKEPL/020/18-19/Q&M/064	Borrow Area	Source of Earth to be obtained from Borrow Area for use in Embankment Subgrade Median filling
29	12-02-19	AA/VKE/PVKEPL/021/18-19/Q&M/065	Source Approval	Submission of Company Profile and Credential for Mukesh A. Patel for Third Party Test
30	12-02-19	AA/VKE/PVKEPL/022/18-19/Q&M/066	Source Approval	Company Profile & Credentials Giriraj Hume Pipe Industries, T&G Precast Industries & Veda Pipe Industries
31	12-02-19	AA/VKE/PVKEPL/023/18-19/Q&M/067	Source Approval	Test Report of NP4 Hume Pipe of 1200 mm Diameter
32	12-02-19	AA/VKE/PVKEPL/024/18-19/Q&M/068	Source Approval	REG SOURCE APPROVAL OF ADMIXTURE
33	12-02-19	AA/VKE/PVKEPL/025/18-19/Q&M/069	Source Approval	REG TESTING OF SOLUBLE SULPHATE CONTENT FOR BORROW MATERIAL
34	12-02-19	AA/VKE/PVKEPL/026/18-19/Q&M/070	Source Approval	Submission of Third Party test report of Water to be used for concreting
35	13-02-19	AA-VKE-NHAI-PVKEPL-009-18-19-USW-072	Utility Shifting	Estimates for lines for Utility Shifting IN PALEJ SUB DIV IN GUJARAT
36	13-02-19	AA-VKE-NHAI-PVKEPL-010-18-19-USW-073	Utility Shifting	Estimates for lines for Utility Shifting IN AMOD SUB DIV IN GUJARAT
37	13-02-19	AA-VKE-NHAI-PVKEPL-011-18-19-USW-074	Utility Shifting	Estimates for lines for Utility Shifting IN BHARUCH SUB DIV IN GUJARAT
38	14-02-19	AA-VKE-NHAI-017-18-19-INVOICE-081		Leave of absence of Key Staff & Sub Key Staff in the project
39	15-02-19	AA-VKE-PVKEPL-027-18-19-DESIGN REVIEW-084	Drawing	Submission of design and drawings of LVUP
40	15-02-19	AA-VKE-PVKEPL-028-18-19-Q&M-085	Source Approval	Source Approval of Aggregates for Mix Design Purpose
41	16-02-19	AA-VKE-PVKEPL-029-18-19-Q&M-086	Source Approval	Source Approval of Sand -1 for Mix Design Purpose
42	18-02-19	AA-VKE-PVKEPL-030-18-19-DESIGN REVIEW-094	Drawing	Review of Hydrology rport of Major Bridge at KM 321+253
43	20-02-19	AA-VKE-NHAI-PVKEPL-018-18-19-LA-095		Fulfillment of Conditions Precedent by Authority
44	22-02-19	AA-VKE-NHAI-PVKEPL-020-18-19-CP-104		Request for Fulfillment of Conditions Precedent by Authority -Reg
45	23-02-19	AA-VKE-NHAI-022-18-19-LEAVE-106		Leave of absence of Key Staff in the project – Reg.
46	23-02-19	AA-VKE-PVKEPL-031-18-19-Q&M-113	Compliance	Source of Earth to be obtained from Borrow Area for use in Embankment Subgrade Median filling BA-02
47	23-02-19	AA-VKE-PVKEPL-032-18-19-Q&M-114	Compliance	Proposal for borrow area 04,06&08 at Simarkha, Suthadara & Kelod village respectively
48	23-02-19	AA-VKE-PVKEPL-033-18-19-Q&M-115	Compliance	Source of Earth to be obtained from Borrow Area for use in Embankment Subgrade Median filling BA-11
49	23-02-19	AA-VKE-PVKEPL-034-18-19-Q&M-116	Compliance	Source of Earth to be obtained from Borrow Area for use in Embankment Subgrade Median filling BA-05
50	23-02-19	AA-VKE-PVKEPL-035-18-19-Q&M-117	Compliance	Source of Earth to be obtained from Borrow Area for use in Embankment Subgrade Median filling BA-10
51	23-02-19	AA-VKE-PVKEPL-036-18-19-Q&M-118	Compliance	Source of Earth to be obtained from Borrow Area for use in Embankment Subgrade Median filling BA-09
52	23-02-19	AA-VKE-PVKEPL-037-18-19-Q&M-119	Compliance	Source of Earth to be obtained from Borrow Area for use in Embankment Subgrade Median filling BA-01
53	23-02-19	AA-VKE-PVKEPL-038-18-19-Q&M-120	Compliance	Source of Earth to be obtained from Borrow Area for use in Embankment Subgrade Median filling BA-03
54	23-02-19	AA-VKE-PVKEPL-039-18-19-Q&M-124	Source Approval	Submission of Joint inspection test report of HPC NP4 1200mm dia
55	26-02-19	AA-VKE-PVKEPL-002-18-19-QA&QC-127	RFI	Fromats for RFI Summary Sheet
56	25-02-19	AA-VKE-PVKEPL-040-18-19-Q&M-131	Source Approval	Submission of mix design for concreting with cement of Ultratech and admixture of Kunal
57	25-02-19	AA-VKE-PVKEPL-041-18-19-Q&M-132	Source Approval	Submission of mix design for concreting with cement of Ultratech and admixture of BASF
58	28-02-19	AA-VKE-PVKEPL-042-18-19-DESIGN REVIEW-137	Drawing	Submission od D&D of Retaining & Toe walls
59	02-03-19	AA-VKE-PVKEPL-043-18-19-Q&M-143	Source Approval	Submission of Third Party test report of Aggregate (20mm & 10mm) proposed in project highway.
60	02-03-19	AA-VKE-PVKEPL-044-18-19-Q&M-144	Source Approval	Submission of Third Party test report of Sand proposed in project highway.
61	02-03-19	AA-VKE-PVKEPL-045-18-19-Q&M-145	Source Approval	Submission of Third Party test report of Sand proposed in project highway.
62	02-03-19	AA-VKE-PVKEPL-046-18-19- DESIGN REVIEW-153	Report	Review of Hydrology report of Minor Bridge at Km 294+085
62	07-03-19	AA-VKE-PVKEPL-047-18-19-SURVEY-163	Survey	Submission of TBM list and Traverse Coordinates
63	07-03-19	AA-VKE-PVKEPL-048-18-19- DESIGN REVIEW-165	report	Humidity chart of Bharuch dist.
64	07-03-19	AA-VKE-PVKEPL-049-18-19-DESIGN REVIEW-167	Compliance	Review of compliance to our comments on design and drawing of BC
65	09-03-19	AA-VKE-PVKEPL-031-18-19-MOBI.ADV-170	office change	Change of Office Premises
66	18-03-19	AA-VKE-PVKEPL-037-18-19-TREE CUTTING-189	env.	Request to grant the tree cutting permission at CH-307+193 for construction of VOP
67	19-03-19	AA-VKE-PVKEPL-054-18-19-Q&M-199		Submission of construction methodology for construction of embankment and execution of embankment construction without conforming specification and standards
68	20-03-19	AA-VKE-PVKEPL-037-18-19-LEAVE-201	leave	Leave absence of key staff and sub staff in the project
69	20-03-19	AA-VKE-PVKEPL-055-18-19-DESIGN REVIEW-202	D&D	Submission of structure design and drawing (design report, GAD and reinf. Drawing) of 2MIB, 3MNB, 1VUP & 1PUP
70	20-03-19	AA-VKE-PVKEPL-056-18-19-DESIGN REVIEW-203	compliance	Compliance to the observation made on submitted pedestrian underpass/ cattle underpass (PUP/CUP) Design & Drawing (Without cushion) 28 nos.
71	22-03-19	AA-VKE-PVKEPL-057-18-19-Q&M-209	NCR1	Non-Conformance Report (NCR)
72	22-03-19	AA-VKE-PVKEPL-058-18-19-Q&M-210	NCR1	Works done prior to the declaration of Appointed Date.
73	26-03-19	AA-VKE-PVKEPL-058-18-19-Q&M-210	Compliance	Compliance to the observation made on submitted Pedestrian Underpass / Cattle Underpass (PUP/CUP's) Design and Drawing (without cushion) (28 nos)

Mobilization of Manpower

Name of the Employee		Designation	Department
Arvind kumar	Joshi	Sr. General Manager	SPV
Amiya	Sahu	Dy. General Manager	Technical
Virendra	Parikh	Sr. Project Manager	Technical
Keshubhai	Vadalia	Works Manager	Technical
Mayur	Pavagadhi	Dy. Project Manager	Highway
Vijay Kumar	Joshi	Dy. Project Manager	Structure
Dineshbhai	Patel	Manager	Store
Tanweer	Khan	Manager	Mechanical
Sunil	Singh	Accountant	Finance & Accounts
HR & ADMIN DEPARTMENT			
Sr. Executive	1	Nos	HR & ADMIN
Officer (S&V)	1	Nos	HR & ADMIN
Executive	2	Nos	HR & ADMIN
Jr. Executive	1	Nos	HR & ADMIN
Asst. Offices	1	Nos	HR & ADMIN
Security Violation	0	Nos	HR & ADMIN
Supervisor	1	Nos	HR & ADMIN
Office boy	2	Nos	HR & ADMIN
PLANNING & BILLING DEPARTMENT			
Sr. Engineer	0	Nos	PLANNING & BILLING
Engineer	1	Nos	PLANNING & BILLING
Asst. Engineer	1	Nos	PLANNING & BILLING
Jr. Engineer	1	Nos	PLANNING & BILLING
Post Graduate Engineer Trainee	1	Nos	PLANNING & BILLING
QA/QC DEPARTMENT			
Engineer	1	Nos	QA/QC
Asst. Engineer	1	Nos	QA/QC
Sr. Lab Technician	2	Nos	QA/QC
Lab Technician	2	Nos	QA/QC
Jr. Engineer	1	Nos	QA/QC
Jr. Lab Technician	4	Nos	QA/QC
Helper	10	Nos	QA/QC
HIGHWAY DEPARTMENT			
Sr. Engineer	3	Nos	Highway
Engineer	2	Nos	Highway
Jr. Engineer	3	Nos	Highway
Sr. Supervisor	1	Nos	Highway
Supervisor	4	Nos	Highway
STRUCTURE DEPARTMENT			
Sr. Engineer	1	Nos	Structure
Engineer	1	Nos	Structure
Asst. Engineer	3	Nos	Structure
Jr. Engineer	2	Nos	Structure

Graduate Engineer Trainee	1	Nos	Structure
Supervisor	2	Nos	Structure
SURVEY DEPARTMENT			
Sr. Surveyor	2	Nos	Survey
Surveyor	2	Nos	Survey
Helper	4	Nos	Survey
STORE DEPARTMENT			
Sr. Executive	2	Nos	Store
Executive	1	Nos	Store
Supervisor	1	Nos	Store
WEIGH BRIDGH			
Jr. Executive	3	Nos	Weigh Bridgh
PURCHASE DEPARTMENT			
Sr. Executive	1	Nos	Purchase
SAFETY DEPARTMENT			
Sr. Officer	1	Nos	Safety
IT DEPARTMENT			
Executive	1	Nos	IT
MECHANICAL DEPARTMENT			
Engineer	2	Nos	Mechanical
Asst. Engineer	1	Nos	Mechanical
Executive	1	Nos	Mechanical
Sr. Supervisor	1	Nos	Mechanical
Supervisor	1	Nos	Mechanical
Jr. Supervisor	1	Nos	Mechanical
Sr. Mechanic	2	Nos	Mechanical
Mechanic	1	Nos	Mechanical
Sr. Welder	1	Nos	Mechanical
Welder	1	Nos	Mechanical
Forman	1	Nos	Mechanical
Sr. Electrician	2	Nos	Mechanical
Electrician	1	Nos	Mechanical
Driver	25	Nos	Mechanical
Operator	14	Nos	Mechanical
Tyre Fitter	1	Nos	Mechanical
Helper	5	Nos	Mechanical
SPV DEPARTMENT			
Asst. Engineer	1	Nos	SPV

Mobilization of Resources (Plant and Machineries)

S. No	Name of Machinery	Nos of Equipment	Remarks
1	Excavator	22	
2	Tipper	69	
3	Soil Compactor	16	
4	Dozer	2	
5	Water Tanker	12	
6	Diesel Dispenser	3	
7	Grader	14	
8	Loader	2	
9	Back Hoe	6	
10	Transit Mixer	9	
11	Crusher	1	
12	Concrete Batching Plant	3	
13	Weigh Bridge	3	
14	WMM Plant	0	
15	Hydra Crane	2	
16	Hot Mix Plant	0	
17	Concrete Pump	1	
18	Tractor	2	
19	Tower Light	2	
20	DG Set	15	
21	Light Vehicle	35	
22	Trailer	3	
23	Concrete Boom Placer	0	
24	Baby Tandem Roller	0	
25	Mobile Service Van	1	

Site Photograph



Concrete Batching Plant Setup at Camp (60,120 CUM/Hr. Capacity)





Weighbridge establishment at camp



Paver Unloading at camp



C&G work at 296+200



C&G work at 298+500



OGL level at 298+500



C&G work at 306+050



Trail mix design of M-20



Cube casted for Trail mix design of M-40



Slum test for trail mix design of M-35 Pile



Aggregate Tasting



FDD checking Emb 2nd layer Ch. - 294+080 to 294+200 lhs with client



FDD checking Emb 1st layer Ch. – 314+120 to 314+400 lhs



BA no 13 ch.321+600 R/S 700 mtr.in side Procter test



Pipe laying in progress for HPC at ch_311 +969



Test pile concreting at 302+ MJB



Test pile cage lowering at 299 flyover



Pile load test @ 321+253 MJB in progress



Toolbox talk and safety instruction at camp





Toolbox talk and safety instruction at camp

